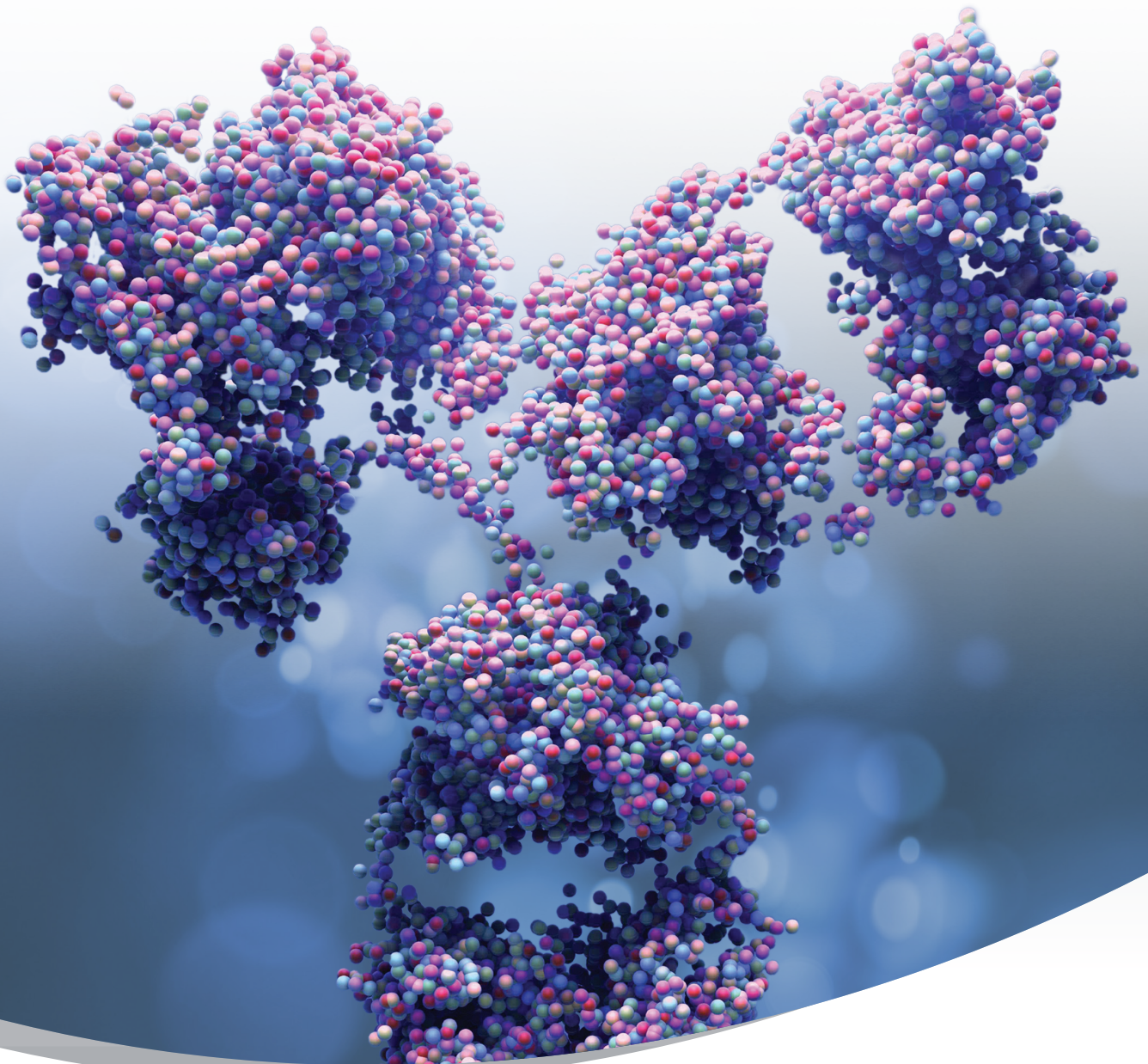




# ValitaTiter

## IgG QUANTIFICATION ASSAY

SPEED • PERFORMANCE • SIMPLICITY • AUTOMATION  
96- & 384-WELL FORMATS



ACCELERATING  
*answers*



# Rapid, High-throughput IgG Quantification Assay

## Results in minutes not hours

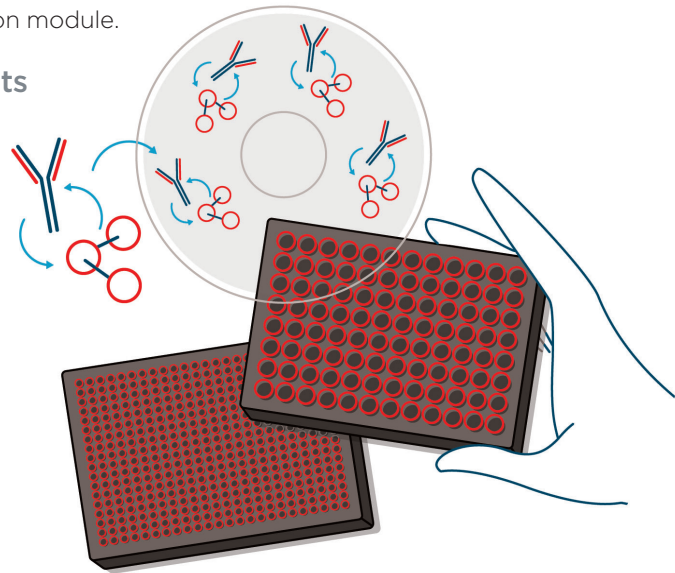
The ValitaTiter assay is a plate based, 96- and 384-well assay that offers a rapid, cost effective way to measure IgG. The ValitaTiter assay is among the industry's fastest IgG tests and is compatible with all plate readers with a Fluorescence Polarization module.

## Straight from culture to plates and results

- No sample preparation
- No additional reagents
- No wash

## Measure IgG directly in cell suspension

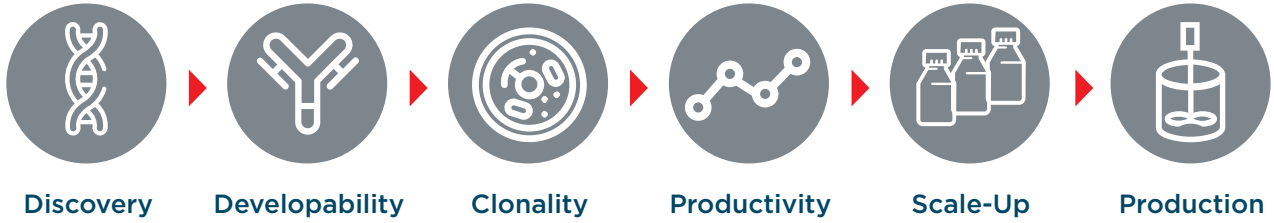
- **Simple:** Add, mix, read
- **Rapid:** Results in less than 15 minutes
- **Automation friendly:** 3 steps in standard plates
- **Value for money:** Competition-beating prices



## VALITATITER ASSAY TECHNICAL FEATURES

- **Detection range and precision**
  - **ValitaTiter:** 2.5 mg/L - 100 mg/L
  - **ValitaTiter Plus:** 100 mg/L - 2000 mg/L
- **Plate format:** 96- & 384-well plate formats
- **Assay precision:** < 2.5 % RSD for inter- and intra-assay precision
- **Assay accuracy:** > 95 %
- **Cell robustness:** Up to  $15 \times 10^6$  cells/mL
- **Assay time:** Add, Mix, Read < 15 minutes (96-well ValitaTiter plates); < 30 minutes (96-well ValitaTiter Plus plates)
- **Fluorescent label:** FITC (Excitation max = 490, Emission max = 525)
- **IgG binding peptide:** Fc binding peptide: binding domain 1 of Protein G
- **IgG species:** Validated for Human and Rabbit
- **IgG formats:** All Fc-containing IgGs (standard, bispecific, fusion proteins)
- **IgG subclasses:** 1,2,3,4 (human)
- **IgG light chain:** Lambda ( $\lambda$ ), Kappa ( $\kappa$ )

## APPLICABLE IN ANY IgG QUANTIFICATION WORKFLOW



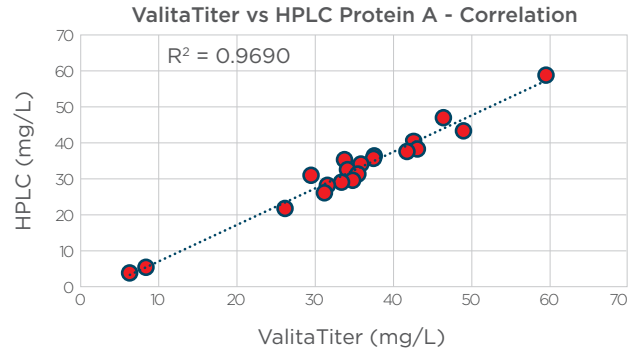
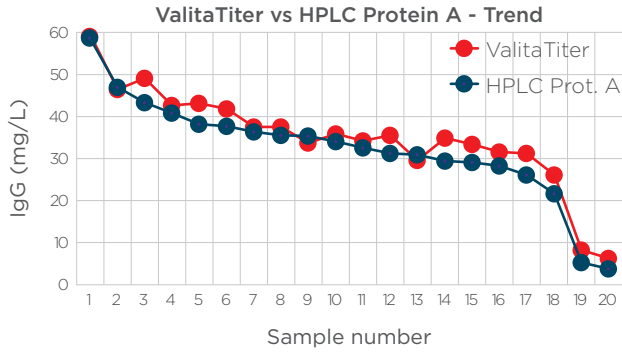
## COMPARISON OF ANALYSIS ATTRIBUTES OF ELISA, HPLC, BLI AND THE VALITATITER ASSAY

In the measurement of IgG, the ValitaTiter assay has a number of significant advantages over traditional technologies such as HPLC, ELISA and BLI.

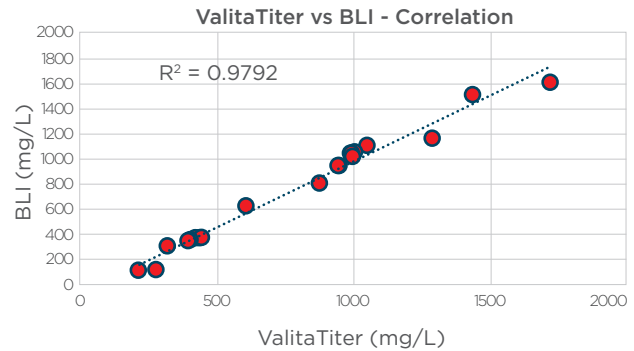
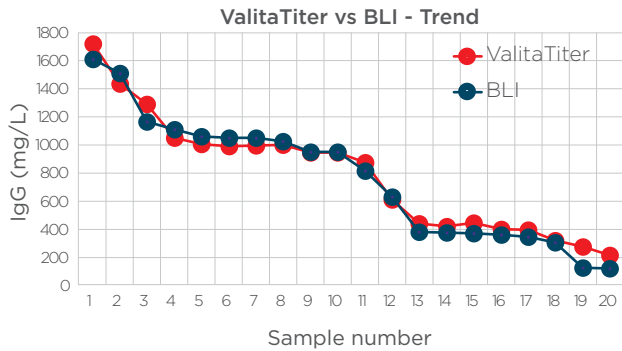
	ValitaTiter	BLI	ELISA	HPLC
Assay Time	15 mins	1 hour	5 hours	10 hours
Sample prep	none	none	cell centrifugation	cell centrifugation and protein purification
Reagents	1	>2	>6	2
Steps	add, mix, read	>3	>20 steps	>5
Costs	\$	\$\$\$\$	\$	\$\$\$

# COMPARISON OF ANALYSIS ATTRIBUTES OF ELISA, HPLC, BLI AND VALITATITER ASSAY

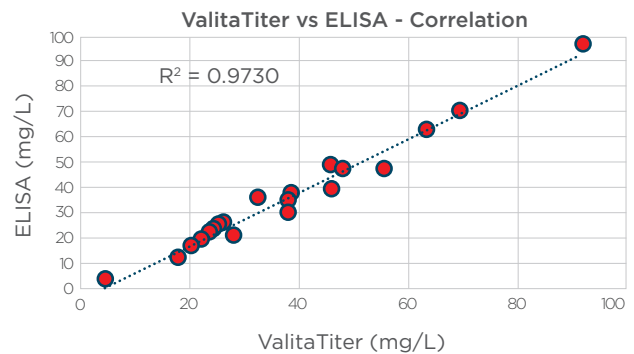
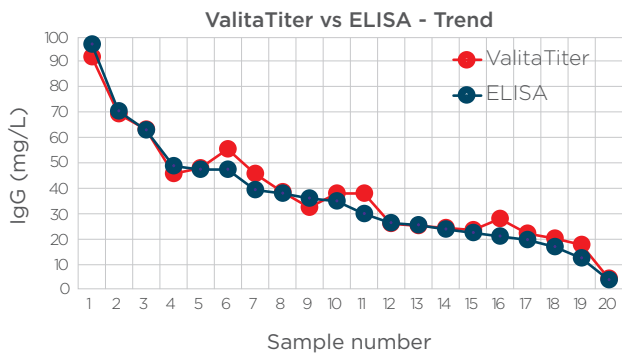
## HPLC Protein A



## BLI



## ELISA



Valita, ValitaTiter and the ValitaCell logo are trademarks or registered trademarks of ValitaCell in the United States and other countries. ValitaCell is a Beckman Coulter Company. This method is for demonstration only, and is not validated by Beckman Coulter. Beckman Coulter makes no warranties of any kind whatsoever express or implied, with respect to this protocol, including but not limited to warranties of fitness for a particular purpose or merchantability or that the protocol is non-infringing. All warranties are expressly disclaimed. Your use of the method is solely at your own risk, without recourse to Beckman Coulter. Not intended or validated for use in the diagnosis of disease or other conditions.

© 2023 Beckman Coulter, Inc. All rights reserved. Beckman Coulter, the stylized logo, and the Beckman Coulter product and service marks mentioned herein are trademarks or registered trademarks of Beckman Coulter, Inc. in the United States and other countries. All other trademarks are the property of their respective owners.



For Beckman Coulter's worldwide office locations and phone numbers, please visit Contact Us at [beckman.com](https://www.beckman.com)

2022-GBL-EN-100351-v4